



Blue Iris Deployment

Secure, World Class Data Center

Meeting the needs of customers with mission critical applications requires extensive knowledge and dedication. Ensuring that systems are up and running whenever they are needed is even more important when patient's lives are on the line. That's why Blue Iris was designed to be deployed as a hosted solution in a world-class data center.*



To ensure our customer's success we partnered with ARINC to provide our hosting solution and to ensure that no matter what demands are placed on Blue Iris applications, the support and infrastructure is there to deliver the information.

Class III Data Center

All Blue Iris solutions deployed in this manner are hosted through ARINC's Class III data center in Annapolis, MD.

This data center, backed up by a fully functional center in Islip, NY., delivers approximately 15 million mission-critical messages a day across multiple industries and routinely meets or exceeds its service level commitments which include availability, time sensitivity and guaranteed delivery standards. ARINC enforces best practice for the operations of its data centers through its ISO 9001:2000 compliant processes.

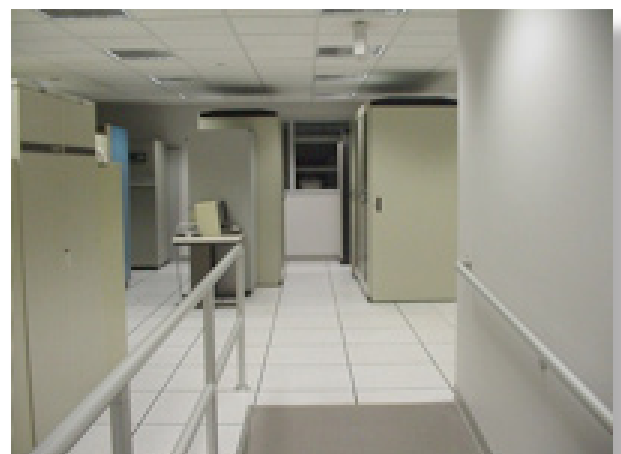
Securing Your Data

Knowing who you can trust is everything when it comes to the security of your data. All Blue Iris hosted solutions are protected by a blanket of security that rivals the most sophisticated facilities in the world.

- 24 hour security guards
- Electronic badge reader access
- Intrusion-detection alarms
- Video surveillance and fully monitored facilities
- Carefully screened staff members - full background checks

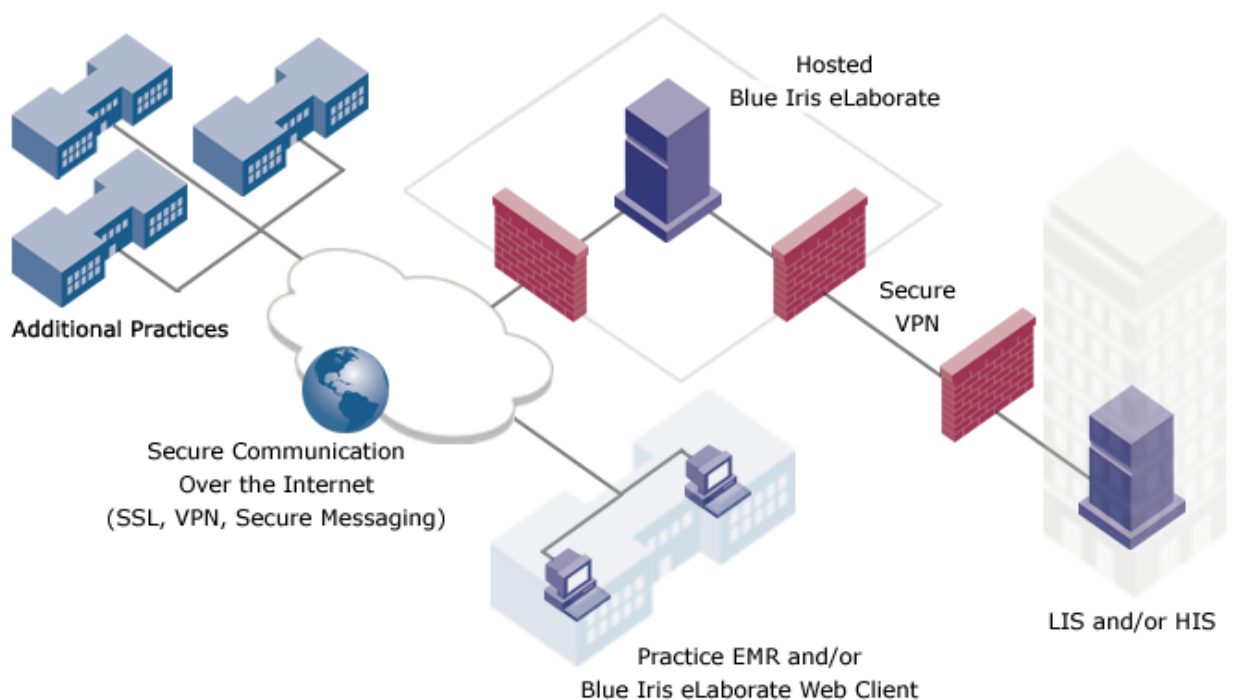
Protecting Your Data

Not allowing access to your data is one thing, ensuring that your data itself is protected is a whole additional level. All Blue Iris hosted solutions benefit from the latest in network management capabilities.



- 7x24 hour managed data center coverage
- Sophisticated trouble tracking and resolution systems and processes
- Multiple ingress and egress for communications
- Multiple transport carriers and ISP's to ensure ongoing communications
- A 3-tiered power system with multiple power grids, redundant diesel generators and uninterruptible power supplies sufficient to support emergency operations
- Disaster recovery plans that are tested regularly to ensure continued operations
- Climate control, fire detection and suppression and water detection systems
- Multiple telecommunications technologies to provide optimal service

Typical Hosted Deployment Architecture



** Forward deployment option (deployed at a customer site) is available if desired. Please contact us for more information on a forward deployed solution.*